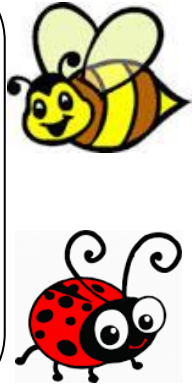


Dear Ladybirds and Bumblebees,

You will find an animal guessing game on the back of this week's newsletter. Cut out the 4 rectangles, fold them in half, and read the clues to an adult at home or get an adult to read them to you. Can the person being read to guess the animal from the clues? When you've finished playing, why not have a go at making your own animal guessing game! All you'll need is some paper that you can fold in half. Write your clues on one side and draw your pictures on the other. If you make any, we would love for you to bring them into school to show us!

Love from Lottie and Buzz



Week beginning 15<sup>th</sup> June 2026

Dear Parents/Carers,

Firstly, we have to start by saying a huge well done to all of the children for the effort, enthusiasm and sportsmanship they demonstrated during Sports Day at the beginning of the week! We were so, so proud of each and every one of them and hope they are proud of themselves too.

In Literacy this week, the children have been showing off their sentence writing skills while writing their innovated versions of The Three Billy Goats Gruff, and in Maths they have been recapping doubles to 10 and using language such as more than, fewer than and equal to, to compare amounts.

Our wider curriculum learning has been varied this week, from drawing self-portraits in Art, to discovering how to draw a picture on an iPad, and thinking about how humans and animals change as they get older.

We have really enjoyed creating animals in our Creative Area these past couple of weeks and we are now running very low on junk modelling materials. We would be very appreciative of any recycling you may have at home, particularly cardboard boxes, toilet roll tubes and kitchen roll tubes. No egg boxes please. Thank you so much.

Plea – We would be grateful for any pairs of children's shoes that you no longer need. These could be trainers, plimsolls or school type shoes, even if they are not in brilliant condition, we will happily take them off your hands to have as spare pairs in school in case children's shoes get wet or dirty. Many thanks in advance.

#### Trip to Wingham

On Wednesday next week we have our trip to Wingham and we just wanted to remind you of a few key points –

- Children need to bring a sun hat and sun cream for fine weather, as well as a raincoat. (Please ensure sun cream is applied before school as well)
- They will need to bring a rucksack that they are able to carry their belongings and lunch in.
- Children will wear school uniform but may wear trainers if they find these more comfortable.
- Please let us know if your child suffers from travel sickness and will need to take medication with them.

Along with this newsletter, you will also find a social story to support your child with some information about the day we have planned at Wingham. We will share this with the children at school, but if you can look at it at home as well, that would be great.

#### Dates for your diaries:

- **Wednesday 24<sup>th</sup> June**- Trip to Wingham Wildlife Park
- **Tuesday 30<sup>th</sup> June**- Book share
- **Friday 10<sup>th</sup> July**- PTA Summer Sizzle
- **Tuesday 14<sup>th</sup> July** – Celebration Event 2pm.
- **Tuesday 14<sup>th</sup> July** – Foundation to Year 1 Transition meeting 3.20pm
- **Friday 17<sup>th</sup> July**- Last day of Term 6

Please remember that if you have any queries or questions, you can write us a note in your child's home-school diary or catch us at the end of the school day; we are always happy to help.

The Foundation Team

# What am I?

I have four legs.  
I love to go for walks.  
I say 'woof woof'.

twinkl.com



# What am I?

I have four legs.  
I like to eat leaves.  
I have a very long neck.

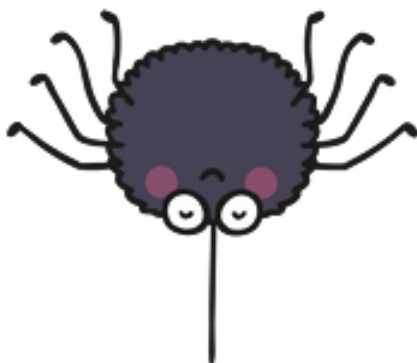
twinkl.com



# What am I?

I have eight legs.  
I eat flies.  
I live in a web.

twinkl.com



# What am I?

I have six legs.  
I can fly.  
I am red with black spots.

twinkl.com



## Our trip to Wingham Wildlife Park

We will travel on a coach to get there.



We are going to Wingham Wildlife Park.



First, we are going to look at the animals and listen to a talk.

=



Then we will eat lunch and play in the park.



After lunch we will see some more animals.



Before coming back to school on the coach in for home time.

